

KÄRCHER

KÄRCHER

Professional

PRODUCT CATALOGUE 2024

Worldwide Market Leader in Cleaning Solutions & Technologies

We work constantly to develop new cleaning solutions. With over 1,000 employees in research and development worldwide, we have 632 active patents and 90% of our machines sold are less than 5 years old.

We specialize in manufacturing high-pressure cleaners (hot & cold), vacuum cleaners (wet & dry), floor scrubbers, carpet cleaners, steam cleaners, air & water purifiers, outdoor & municipality sweepers and Vehicle cleaning systems.



Middle East Regional Operation

14
COUNTRIES

50+
SHOWROOMS

1000+
PRODUCTS

 **German**
Engineering
and Technology

COLD WATER HIGH PRESSURE WASHERS



HD 5/11



HD 6/15



HD 9/23 DE



HD 10/25-4 S

Part No.	Machine Model	High pressure hose (m)	Water Flow (l/h)	Max Pressure (bar)	Operating Pressure (bar)	Power Rating (kW)	Motor	Weight (kg)	Dimension (l x w x h) (mm)
1.520-960.0	HD 5/11 P	10	490	160	100	2.2	-	20.6	351 x 312 x 904
1.520-900.0	HD 5/12 C	10	500	175	120	2.5	-	24.4	380 x 360 x 930
1.150-930.0	HD 6/15 M	10	560	225	150	3.1	-	29	400 x 455 x 700
1.187-903.0	HD 7/15 G	10	650	210	150	-	Honda motor	39.5	790 x 608 x 1104
1.187-906.0	HD 9/23 G	15	400-930	270	40 - up to 230	-	Honda motor	75.5	866 x 722 x 1146
1.810-254.0	HD 9/23 De	15	400-930	315	40 - up to 230	-	Yanmar Motor	107.3	870 x 725 x 1170
1.367-306.0	HD 6/15-4 Classic	10	450-600	190	70-150	3.4	-	52	709 x 469 x 1000
1.524-933.0	HD 6/16-4 M Plus	10	230-600	190	30-160	3.4	-	48	467 x 407 x 1010
1.286-907.0	HD 10/25-4 S	10	500-1000	209	30-190	7.5	-	72.8	560 x 500 x 1090
1.367-154.0	HD 13/35-4 Cage	10	500-1300	350	-	15	-	195	930 x 800 x 920

HOT WATER HIGH PRESSURE WASHERS



HDS 6/14



HDS 10/20-4 M



HDS-E 8/16-4 M



HDS 1000 De

Part No.	Machine Model	High pressure hose (m)	Operating Pressure (bar)	Power Rating (kW)	Max Temp. (°C)	Fuel Tank (l)	Weight (kg)	Dimension (l x w x h) (mm)
1.169-900.0	HDS 6/14 C	10	140	3.6	80	15	100	1060 x 650 x 920
1.173-900.0	HDS 7/16 C	10	30-160	4.7	80	15	114.6	1060 x 650 x 920
1.174-900.0	HDS 8/18-4 C	10	30-180	6	80 / 155	15	128.2	1060 x 650 x 920
1.077-810.0	HDS 9/18-4 M	10	30-180	6.4	80 / 155	25	156	1330 x 750 x 1060
1.071-900.0	HDS 10/20-4 M	10	30-200	7.8	80 / 155	25	171	1330 x 750 x 1060
1.071-914.0	HDS 12/18-4 S	10	30-180	8.4	80 / 155	25	187.1	1330 x 750 x 1060
1.071-927.0	HDS 13/20-4 S	10	30-200	9.3	80 / 155	25	200.5	1330 x 750 x 1060
1.030-904.0	HDS-E 8/16-4 M 24 kW	10	30-160	-	45 / 85	-	122.1	1330 x 750 x 1060
1.811-938.0	HDS 1000 De	15	40-200	-	80 / 98	5.5	185	1100 x 750 x 785
1.071-100.0	HDS 2000 Super	15	30-180	2 X 6.7	80 / 98	25	280	1500 x 834 x 1015

RELATED ACCESSORIES:



Roller brush 500



iSolar 800 Brush



Surface cleaner FRV 30



Trigger Gun EASY!Force

WET & DRY VACUUM CLEANERS



NT 27/1



NT 65/2



NT 70/2



NT 90/2

Part No.	Machine Model	Air Flow Rate (l/s)	Vacuum mbar	Sound Level (dB(A))	Container Capacity (l)	Max. Power Rating (W)	Weight (kg)	Dimension (l x w x h) (mm)
1.428-100.0	NT 27/1 Adv	67	200	72	27	1380	7.5	420 x 420 x 525
1.428-611.0	NT 48/1	67	200	72	48	1380	14.6	490 x 390 x 780
1.667-291.0	NT 65/2 Ap	2 x 74	254	73	65	2760	20	600 x 480 x 920
1.667-269.0	NT 70/2	2 x 74	254	75	70	2400	25.2	720 x 510 x 975
1.667-270.0	NT 70/3	3 x 74	254	79	70	3600	27.6	720 x 510 x 975
1.667-701.0	NT 90/2 Me Classic	2 x 53	225	76	90	2300	26	580 x 510 x 995
1.148-201.0	NT 30/1 Tact L	74	273	69	30	1380	13.5	560 x 370 x 580

DRY VACUUM CLEANERS



WVP 10



CV 38/2



BVL 5/1



T 15/1

Part No.	Machine Model	Extension Kit	Working Width Nozzle (mm)	Dirty water container capacity (ml)	Battery run time (min)	Battery voltage (V)	Dimension (l x w x h) (mm)
1.633-560.0	WVP 10 Adv	■	280	200	35	3.7	280 x 130 x 335

Part No.	Machine Model	Air Flow Rate (l/s)	Vacuum mbar	Sound Level (dB(A))	Container Capacity (l)	Max. Power Rating		Weight (kg)	Dimension (l x w x h) (mm)
						(W)	Brush (W)		
1.527-150.0	T 10/1	53	240	59	10	800	-	6.3	355 x 310 x 385
1.355-135.0	T 12/1 ecoefficiency	46	185	60	12	500	-	6.4	410 x 315 x 340
1.355-238.0	T 15/1 Hepa	53	240	62	15	800	-	7.1	434 x 316 x 400
1.394-251.0	BVL 5/1 Bp Pack	40	223	65	5	36 V battery		5	220 x 320 x 510
1.033-331.0	CV 38/2 Adv	40	200	65	5.5	850	150	9.5	1215 x 390 x 350
1.057-329.0	CV 48/2 Adv	40	200	65	5.5	850	150	9.7	1215 x 485 x 350

RELATED ACCESSORIES:



Fleece filter bags



Wet filter bag



Cartridge filter, paper



Paper filter bags

STEAM CLEANERS



SG 4/2



SG 4/4



SGV 6/5



SGV 8/5

Part No.	Machine Model	Voltage (v)	Heating Output (W)	Tank Capacity (l)	Steam Pressure (bar)	Weight (kg)	Dimension (l x w x h) (mm)
1.092-302.0	SG 4/2	220	2250	1.5	4	7	460 x 298 x 265
1.092-104.0	SG 4/4	230	2300	4	4	8	475 x 320 x 275
1.092-000.0	SGV 6/5	220	3000	5	6	45	640 x 495 x 965
1.092-012.0	SGV 8/5	220	3000	5	8	45	640 x 495 x 965

CARPET CARE MACHINES & AIR BLOWER



PUZZI 9/1



PUZZI 10/1



BRS 43/500



BRC 45/45

Part No.	Machine Model	Vacuum (mbar)	Spray Rate (l/min)	Spray Pressure (bar)	Fresh / Dirty Water (l)	Vacuum (W) / Brush (W)	Area Perform. (m ² /h)	Weight (kg)	Dimension (l x w x h) (mm)
1.101-701.0	Puzzi 9/1 Bp Pack	150	0.5	0.16 - 0.22	9/7	-	12-18	7.6	540 x 332 x 460
1.092-104.0	Puzzi 10/1	220	1	1	10/9	-	20-25	10.7	710 x 330 x 440
1.193-120.0	Puzzi 10/2 Adv	220	2	2	10/9	-	30-45	11.5	710 x 330 x 440
1.101-120.0	Puzzi 30/4	254	3	4	30/15	1200	-	26	580 x 460 x 930
1.008-057.0	BRC 30/15 C	300	1	3.5	15/17	315	150	36	920 x 360 x 750
1.008-056.0	BRC 45/45 C	300	0.7 (ic) / 3.2 (dc)	3.5 (ic) / 7 (dc)	45/38	1100 / Yes	350 (dc) / 1000 (ic)	48	770 x 545 x 1250
1.006-671.0	BRS 43/500 C	-	0.38 (ic)	3.4 (ic)	7.5	- / Yes	300 (ic)	25	400 x 460 x 1160
1.008-062.0	BRC 40/22 C	299	.38	7	22/19	48	500 (dc) / 900 (ic)		

ic - interim Cleaning / iCapsol
dc - deep cleaning / spray extraction

Part No.	Machine Model	Air flow rate (levels 3/2/1) (m ³ /h)	Blower speed (levels 3/2/1) (rpm)	Cable length	Weight (kg)	Dimension (l x w x h) (mm)
1.004-045.0	AB 20	1115	1355	7.6	7.5	250 x 360 x 550

RELATED ACCESSORIES:



Round brush set



Upholstery nozzle



PW 30/1



Trolley



Microfibre cloth set

ICE BLASTER



IB 7/40



IB 10/8 L2P



IB 15/120 (110V)

Part No.	Machine Model	Connection load (kW)	Dry ice pellets (diameter) (mm)	Working pressure bar	Dry ice consumption (kg/h)	Weight (kg)	Dimension (l x w x h) (mm)
1.574-001.0	IB 7/40 Classic	.6	-	2-10	15-20	70	510 x 760 x 1100
1.574-200.0	IB 10/8 L2P	1	2.5	.7-10	2-8	92	870 x 450 x 970
1.574-105.0	IB 15/120 (110V)	.6	3	2-16	30-120	95	1000 x 800 x 1300



WPC 120



WPC 100



WPD 50



AF 100

Part No.	Machine Model	Room Size (m ²)	Sound Pressure Level (dB(A))	Filter change indicator	Power Rating (W)	Weight (kg)	Dimension (l x w x h) (mm)
1.024-812.0	AF 100 H13	100	30	■	80	11.3	380 x 380 x 713

Part No.	Machine Model	Power supply V / Hz	Cooling performance chilled still/sparkling (l/h)	Number of users	Hot water output	Weight (kg)	Dimension (l x w x h) (mm)
1.024-404.0	WPD 50	220 - 240 / 50	15	25	No	17	449 x 298 x 399
1.024-405.0	WPD 50 s	220 - 240 / 50	15	25	No	23.9	545 x 365 x 465
1.024-930.0	WPD 200 White	220 - 240 / 50	40	Upto 100	Yes	24.7	545 x 365 x 465
1.024-934.0	WPD 200 Adv. S	220 - 240 / 50	40	Upto 100	Yes	26.7	545 x 365 x 465
1.024-936.0	WPD 200 Adv.	220 - 240 / 50	40	Upto 100	Yes	25.9	545 x 365 x 465

Part No.	Machine Model	Water inlet pressure (bar)	Max. inlet temperature (°C)	Connection load (W)	Filter capacity (l/h)	Weight (kg)	Dimension (l x w x h) (mm)
1.024-510.0	WPC 100 RO	.33	5 / 38	80	up to 100	13.5	372 x 240 x 530
1.024-754.0	WPC 120 UF	1-4	5-38	-	2500	5.7	377 x 168 x 421

AIR & WATER



B 110



B 260



B 300



BR 40/10



BD 38/12



BD 50/50



BDS 43/Orbital

Part No.	Machine Model	Working Width (mm)	Width Vacuum (mm)	Fresh / Dirty Water Tank (l)	Area Perform. (m ² / h)	Battery Capacity (V / Ah)	Weight (kg)	Dimension (l x w x h) (mm)
1.783-213.0	BR 30/4 C Adv	300	300	4/4	200	-	12.4	390 x 335 x 1180
1.783-225.0	BR 30/4 C Bp Pack	200	325	4/4	900	36.5/5.2	19.8	555 x 375 x 1050
1.783-311.0	BR 40/10 C	400	400	10/10	400	-	30	520 x 470 x 1150
1.783-430.0	BD 38/12 C Bp Pack	380	480	12/12	1520	25.2/21	36	995 x 495 x 1090
1.783-430.0	BD 30/4 C Bp Pack	280	325	4/4	900	-	19.8	555 x 375 x 1050
1.127-006.0	BD 50/50 C Bp Pack Classic	510	900	50/50	2040	24/115	52	1170 x 570 x 1025
1.161-071.0	BD 50/70 R Classic Bp Pack	510	900	70/75	2800	24/105	200	1310 x 590 x 1060
1.291-252.0	BDS 43/Orbital C	430	430	12	-	-	54.4	1020 x 520 x 380
1.291-243.0	BDS 43/150 C Classic	430	430	10 Optional	-	-	43	590 x 430 x 1180
1.291-223.0	BDS 43/DUO C Adv	430	430	10 Optional	-	-	47	660 x 430 x 1180
1.291-141.0	BDP 50/1500 C	510	560	-	900	-	35.4	760 x 550 x 1250
1.161-000.2	B 90 R Classic Bp Pack	550-650	850-940	90/90	3300-3900	24/170	272	1450 x 800 x 1200
1.161-400.2	B 110 R Bp Pack*	750	950	110/110	4500	24/170	373	1695 x 975 x 1315
1.246-050.2	B 150 R Bp Pack*	750-900	950-1200	150/150	4500-5400	36/240	-	1790 x 910 x 1410
1.246-230.2	B 200 R Bp Pack*	900-1100	1200	200/200	5400-6600	36/240	475	1860 x 910 x 1410
1.480-250.2	B 260 RI Bp Pack	1000	1200	250/250	8000	36/630	1352	1880 x 1040 x 1600
1.480-235.2	B 300 R I Diesel*	1045 - 1755	1440	300/300	16550	-	1750	2400 x 1540 x 1760

*Note: For Special Configuration. Contact us.

Part No.	Machine Model	Working Width (mm)	Width Vacuum (mm)	Brush speed (rpm)	Motor rating of brush motor (W)	Suction motor (W)	Weight (kg)	Dimension (l x w x h) (mm)
1.737-107.0	BD 17/5 C	170	-	470	150	-	5	360 x 180 x 330
1.310-109.0	BR 47/35 Esc	470	470	870/1090	1100	800	90	1129 x 480 x 1031

RELATED ACCESSORIES:



C Squeegee brush



Pad, soft, 432 mm



Disc brush, soft, natural



Disc brush, medium, red

MUNICIPAL SWEEPERS



MC 250



MCM 600



MC 50



MC 130



MC 130 Plus

Machine Model	Cabin (Person)	Working Width 2 side brushes (mm)	Working Width 3 side brushes (mm)	Container volume (l)	Travel speed (km/h)	Drive perform. (kW)	Permissible Weight (kg)
MC 50 Adv	1	1400	2000	500	20	18.9	1750
MC 130	2	2450	2600	1300	30	48	3500
MC 130 Plus	2	2450	2600	1300	40	48	3500
MC 250	2	2625	2710	2500	60	75	6000
MCM 600	3	2600	3600	6000	40	115	13000

CUSTOMIZABLE MUNICIPAL IMPLEMENT CARRIERS



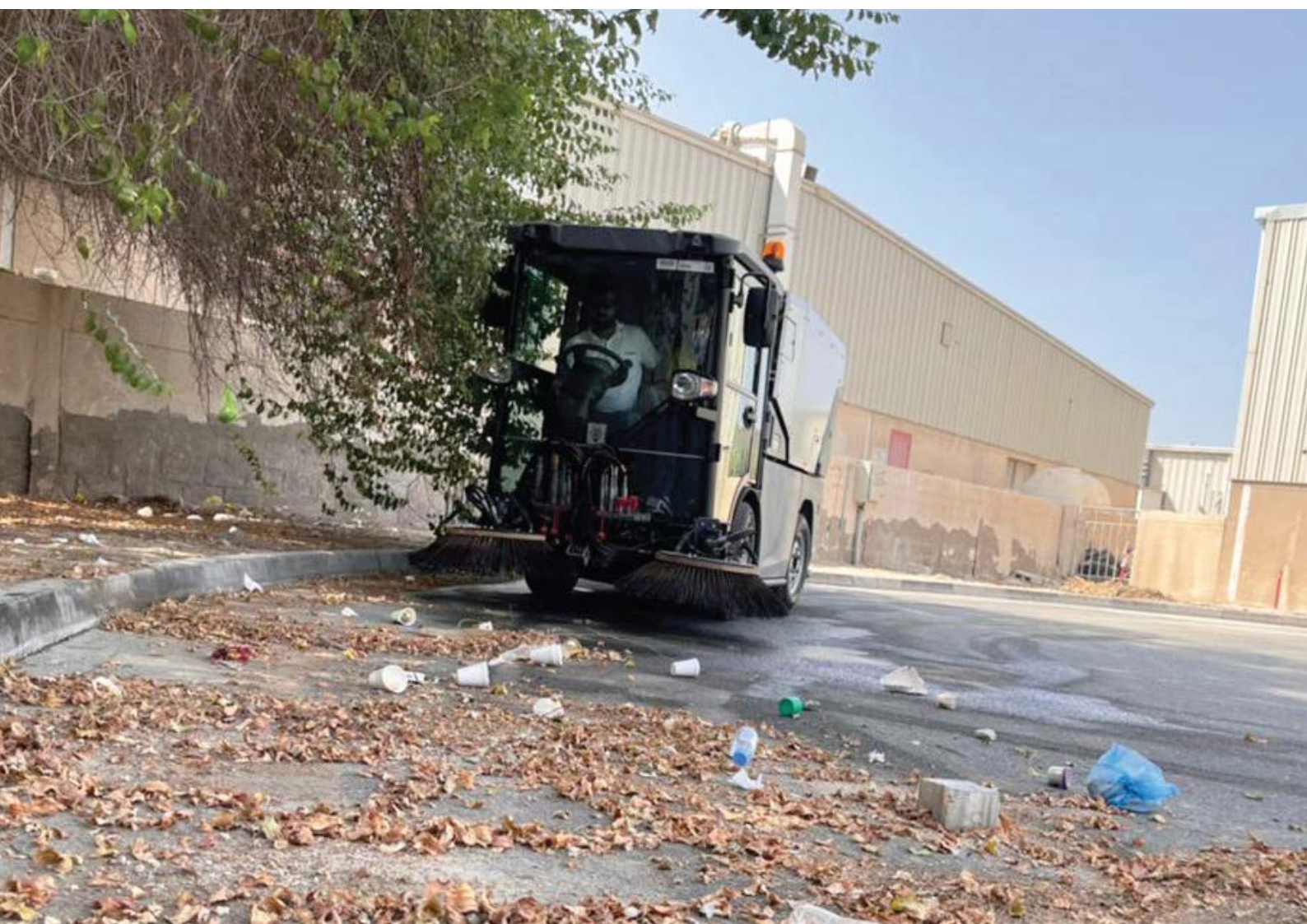
MIC 35



MIC 42

Machine Model	Cabin (Person)	Travel speed (km/h)	Drive perform. (kW)	Permissible Weight (kg)
MIC 26	1	20	18.9	1750
MIC 35	1	25	26	2500
MIC 42	1	25	32	2500

Machine Model	Cabin (Person)	PTO shaft at front	PTO shaft at rear	Travel speed (km/h)	Drive perform. (kW)	Permissible Weight (kg)
X 45i	1	-	-	27	32.6	2300
B 55 SC	1	-	Hydrolics	40	42	3500
C 55 SC	1	Mechanical	Hydrolics	40	42	3500
C 65 SC / TC	1 / 2	Mechanical	Hydrolics	40	48	3500 - 3800
C 70 SC / TC	1 / 2	Mechanical	Hydrolics	40	48	3500 - 4000
S 100	1 / 2	Mechanical	-	40	74.4	5500 - opt. 6000
S 115	1 / 2	Mechanical	-	40	85	5500 - opt. 6000
S 130	1 / 2	Mechanical	-	40	95	5500 - opt. 6000
MUVO	2	-	-	60	80	5500



CAR WASH SYSTEM



CW 1 Klean!Fit



CW 5 Klean!Star iQ

Part No.	Machine Model	Washing height (mm)	Fresh water connection, volume (l/min)	Number of current phases (Ph)	Pressure (bar)	Voltage (V)
1.534-300.2	CW 1 Klean!Fit	2300 / 2600 / 2900	-	3	-	-
1.534-100.2	CW 3 Klean!Star	2100 - 2900	80	3	4	400
1.534-100.2	CW 5 Klean!Star iQ	2100 - 2900	80	3	4	400

TRUCK / BUS WASH SYSTEM



TB 50



RBS 6014



SB 0B

Part No.	Machine Model	Washing height (mm)	Plant Heights (mm)	Plant width (mm)	Volume (l/min)	Pressure (bar)	Power input (kW)
1.534-053.0	TB 50	5050	5989	6047	100	4-6	5.3

Part No.	Machine Model	Washing height (mm)	Washing bay requirement (mm)	Number of current phases (Ph)	Voltage (V)
1.826-405.0	RBS 6014	4205	4620 x 1700 x 1500	3	400

Part No.	Machine Model	Working pressure (bar)	Flow rate per pump (l/h)	Weight (kg)	Dimensions (L x W x H) (mm)
1.319-010.2	SB 0B	100 - 120	500 / 900	330	800 x 1200 x 2100





KM 70/20



KM 100/100



KM 130/300

Part No.	Machine Model	Drive / Drive Power (kW)	Max. Area Performance (m ² / h)	Working Width 1 Side Brushes (mm)	Waste container (ltr)	Weight (kg)	Dimension (l x w x h) (mm)
1.517-107.0	KM 70/20 C 2SB	Manual	2800	700	20	23	1300 x 765 x 1035
1.047-302.0	KM 90/60 R Bp pack Adv *	DC motor	5400	900	60	355	1695 x 1060 x 1260
1.280-105.0	KM 100/100 R G*	Honda/6.7	8000	1000	100	340	2006 x 1005 x 1343
1.280-115.0	KM 100/100 R D*	Yanmar/4.4	8000	1000	100	340	2006 x 1005 x 1343
1.186-139.0	KM 130/300 R D Classic*	Yanmar/15.8	13000	1300	300	923	2040 / 1330 / 1430
1.186-134.0	KM 150/500 R D Classic*	Yanmar/15.8	18000	1500	500	1400	2442 / 1570 / 1640

*Note: For Special Configuration. Contact us.



WVP 10



LB 930/36 Bp



LBB 1060/36 Bp

Part No.	Machine Model	Chain speed (m/s)	Chain gauge	Oil tank capacity (ml)	Battery run time (min)	Performance per battery charge (cuts)	Dimension (l x w x h) (mm)
1.042-504.0	CS 400/36 Bp	23	1.3 mm / 0.050»	160	max. 25 (6,0 Ah)	max. 170 (6,0 Ah)	280 x 130 x 335

Part No.	Machine Model	Air throughput (m ³ /h)	Air speed (m/s)	Blowing power (N)	Runtime per battery charging (min)	Voltage (V)	Weight (kg)	Dimension (l x w x h) (mm)
1.042-507.0	LB 930/36 Bp	930	60	14	40-50	36	5	840 x 150 x 340
1.042-509.0	LBB 1060/36 Bp	1060	65	19	30-40	36	10.8	1600 x 500 x 460

Part No.	Machine Model	Container capacity (l)	Sound level (dB(A))	Voltage (V)	Weight (kg)	Dimension (l x w x h) (mm)
1.394-211.0	BV 5/1 Bp	5	66	36	9.6	365 x 340 x 640
1.394-231.0	HV 1/1 Bp	.9	70	18	2.6	306 x 115 x 284

Part No.	Machine Model	Working width (mm)	Container capacity (l)	Voltage (V)	Weight (kg)	Dimension (l x w x h) (mm)
1.545-127.0	EB 30/1 Adv Li-Ion	300	1	7.2	3.3	250 x 300 x 1340

GASOLINE POWERED



HD 3.0/27 G



MP-373534



PG4-20324

Part No.	Machine Model	Water Flow (l/h)	Operating Pressure (bar)	Motor	CC	Weight (kg)
9.807-727.0	HD 3.0/27 G	660	185	Honda GX200	196	50
9.807-728.0	HD 3.5/35 G	790	240	Honda GX270	270	59
9.807-730.0	HD 4.0/40 Ge	905	275	Honda GX390	389	72
9.807-731.0	HD 3.0/27 GB	660	185	Honda GX200	196	56
9.807-732.0	HD 3.5/35 GB	790	240	Honda GX270	270	70
9.807-734.0	HD 4.0/40 GeB	905	275	Honda GX390	389	89
1.107-001.0	MP-373534	840	240	Honda GX390	389	134
1.107-002.0	MP-455034F	1020	340	Honda GX690	688	188
1.107-010.0	PG4-20324	950	135	Honda GX270	270	104
1.107-011.0	PG4-35324	720	240	Honda GX390	389	113
1.107-005.0	PC3-24324	520	165	Honda GX160	163	58
1.107-008.0	PC4-35324	860	240	Honda GX390	389	83
1.107-224.0	PC4-40324	790	275	Honda GX390	389	85
1.110-042.0	MHC4-35324E	790	240	Honda GX390	389	272

ELECTRIC POWERED



PE4-30024A



SEA4-30024C



MPE5-50024B

Part No.	Machine Model	Water Flow (l/h)	Operating Pressure (bar)	Power Rating (kW)	Motor HP	Weight (kg)
1.106-013.0	PE4-30024A	790	200	8.2	7.5	152
1.106-508.0	SEA4-30024C	790	200	8.3	7.5	138
1.106-001.0	MPE5-50024B	1135	340	19.12	20	242

RELATED ACCESSORIES:



pressure lance



Autowash



Heavy Duty Degreaser



Industrial Grease and Carbon Remover

ULTRA HIGH PRESSURE FOR THE MOST DEMANDING TASKS



Construction



Municipality



Machinery



HD 9/23 De Tr1



Shipyard



Rust Removal



Paint Removal



Plaster Removal



HD 13 35 Ge Cage



HD 9/50-4 Cage



HD 9/100-4 Cage Classic

VACUUM SYSTEMS FOR TOUGH INDUSTRIAL APPLICATIONS

With its various sectors, industry places particular demands on vacuum cleaning solutions: process integration, large quantities, hazardous substances, narrow time slots and lots more. Karcher offers both universal and special machines and systems are required here. We offer all vacuuming solutions for industry.



Mechanical Engineering



Chemical Industry



Industrial vacuums Liquid and Swarf



Industrial vacuums Solid and Dust



Explosion-proof industrial vacuums



Metalworking Industry



Food Industry



Metallurgy & Metal-Forming



Manufacturing of Print Media



Industrial dedusters



Explosion-proof industrial dust removers



Customer-specific vacuum solutions



Professional Cleaning and Care Agents

Clean quickly and more effectively with lower energy consumption and less waste water pollution from mineral oil residues: there are numerous benefits to using Kärcher's professional cleaning and care agents.

One cleaning machine. One cleaning agent. One manufacturer: Kärcher.

Cleaning professionals know what really matters when it comes to cleaning: excellent performance and care combined with the protection of people, the machine and the environment. And naturally the safety of the operator.

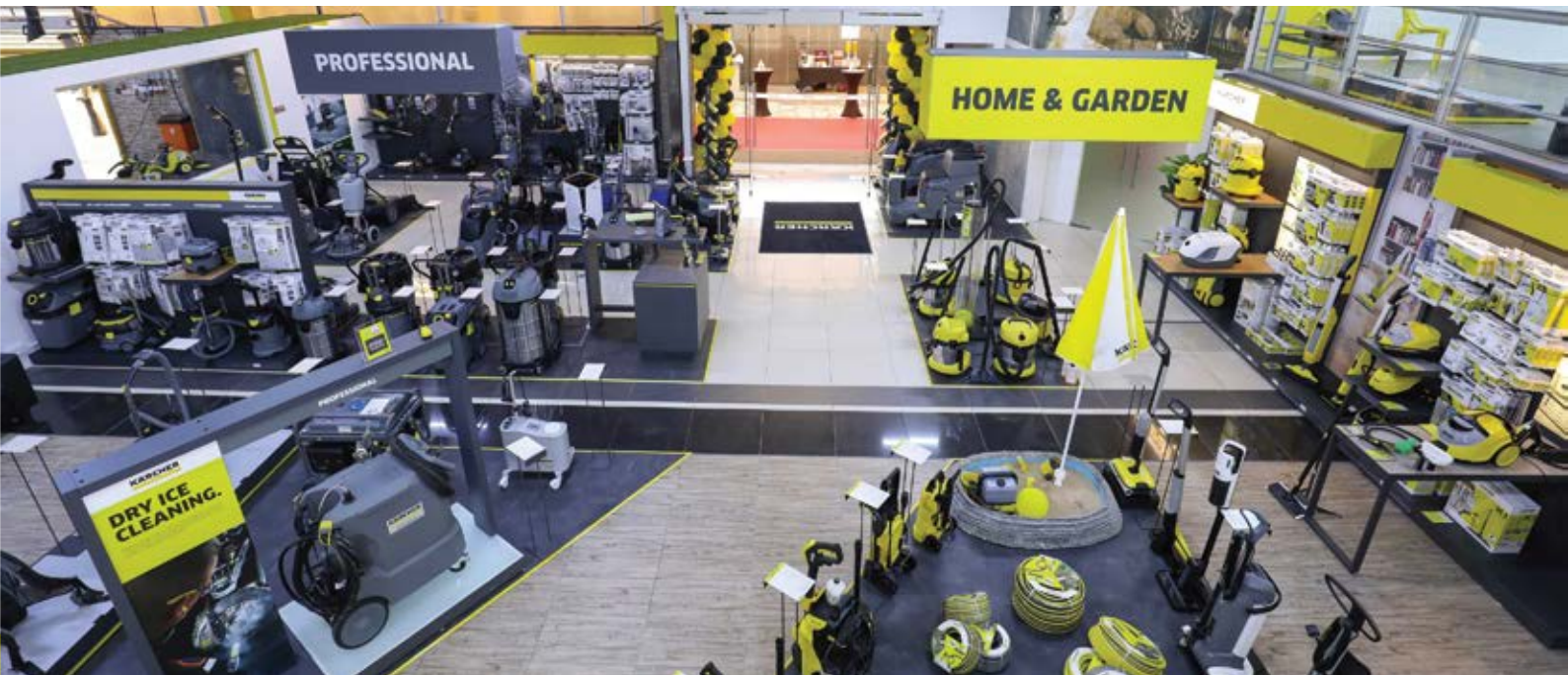
Kärcher cleaning agents and care agents are just as versatile and efficient as the machines in which they are used – as they have been developed specifically for Kärcher cleaning machines. This is the only way to maximise the performance of the machine and cleaning agent system. Kärcher recognised this from an early stage and has used this as its focus in its own Research and Development. It is the basis of our success and the central concept behind our thinking and actions.

Quality Service for You and Your Machines

Do you completely depend on your cleaning machines every day?
Then you need planning reliability, which Kärcher Service provides you through offering: Analysis, Inspections, Maintenance and Training.

Kärcher Service Specialists

Every Kärcher service technician is professionally trained to support all Kärcher machines. Checkups, Inspections and Maintenance are carried out by our trained specialists on site. Regularly, punctually and reliably.



KÄRCHER

makes a difference

Please contact us for more information:

Karcher Center Qatar

Building 219, Street No. 340, Zone 43,
Salwa Road, Al Maamoura
Phone (+974) 4487 2024
Fax (+974) 4487 2197
info@qtc-qatar.com

www.qatartradingcompany.com

